



BLUE MOTION
GAMES

Montreal, Quebec, Canada, (514) 774-6121
sales@bluemotion.games

DESERT CHASE

MULTIPLAYER INTERACTIVE MOTION RIDE

HIGH END IMPACTFUL INTERACTIVE INNOVATIVE



2 Players
65" Screen
Width: 68.1"
Depth: 114.2"
Height: 91.3"



4 Players
100" Screen
Width: 130"
Depth: 111"
Height: 123"

PROVEN FAST ROI

EASY SETUP

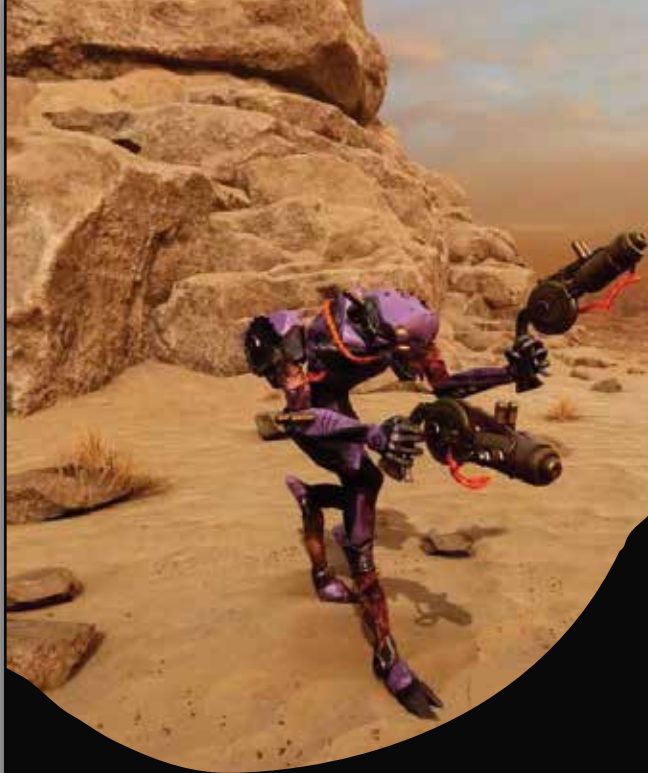
- Force Feedback Guns
- 3 DOF Motion Seats
- 2 Exciting Levels
- Attractive Design
- Solid Dependable Build
- Inviting Look and Feel
- Unattended Attraction
- Card Reader Ready
- Surround Sound System
- In Seat Speakers
- Wind & Vibration Effects

Power Requirements:
20V/60Hz – 10A each inlet (20A total)
230V/50Hz – 5A each inlet (10A total)



BLUE MOTION
GAMES

Montreal, Quebec, Canada, (514) 774-6121
sales@bluemotion.games



STORY & GAME PLAY

Embark on an exhilarating adventure and buckle up for a heart-pounding race through two adrenaline fueled levels spanning both desert and city landscapes. Dodge towering sand dunes in the scorching desert and evade danger while racing against time. As you plunge into a post apocalyptic city, skyscrapers loom and enemies lurk around every corner. Navigate bustling streets, engage in thrilling car chases, and outmaneuver rivals in a bid to reach the final showdown. Objective: Navigate through the city in a rugged vehicle, pursuing and eliminating hordes of zombies and mutant creatures.

With immersive technology, dynamic environments, and challenging bosses in every Level, 'Desert Chase' offers over three-minute experience at each level like no other, where teamwork and skill are the keys to victory!

The game features motion seats that sync with the camera movements for an immersive experience.

DESERT CHASE

